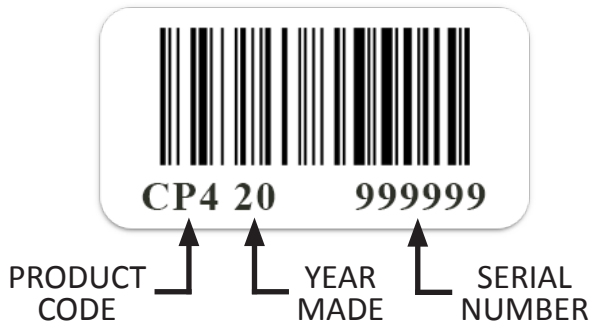


INSTALLATION INSTRUCTIONS FOR CP-4 AUTOMATIC GATE OPENER


1. SERIAL NUMBER

There is a barcode serial number on the bottom of “puck” and on the product box. When calling to talk about your product, please have this number handy.

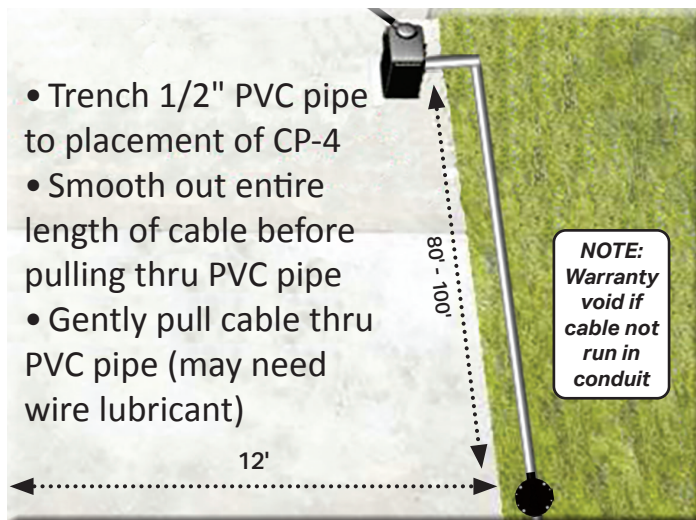


4. CONNECT TO GATE

CP-4 works with all gate operators—powered or solar, single or dual free exit terminals.

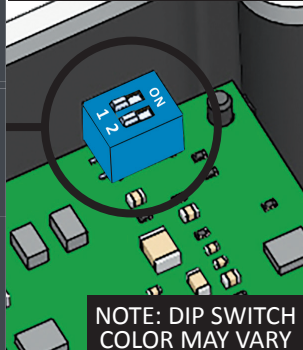
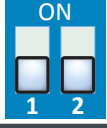
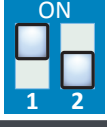
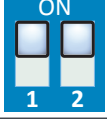
| DUAL EXIT TERMINAL | SINGLE EXIT TERMINAL |
|---|--|
|  RED → POWER + BLACK → POWER - WHITE → COMMON BLUE → EXIT N.O. YELLOW → EXIT N.C. | RED → POWER + BLACK WHITE → GND or COM BLUE → FREE EXIT or OPEN TERMINAL |
| VOLTAGE | CURRENT |
| 8-24 VAC 8-30 VDC | Standby: 30-70 μ A Alarm: 40-60 mA |

2. TRENCH PIPE & CABLE



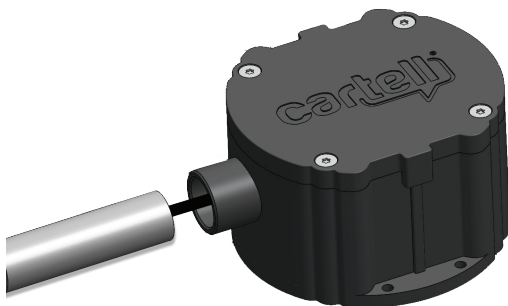
5. TEST SENSITIVITY

NOTE: IN MOST CASES DO NOT ADJUST SENSITIVITY OR REMOVE LID.

| SENSITIVITY ADJUSTMENT | |  NOTE: DIP SWITCH COLOR MAY VARY |
|--|---|---|
| HIGH (Default) Detects vehicle going 5 MPH 12-14' away 1 & 2 in OFF position |  | |
| MEDIUM Detects vehicle going 5 MPH 6-8' away 1 ON & 2 OFF position |  | |
| LOW Detects vehicle going 5 MPH 2-4' away 1 & 2 in ON position |  | |

NOTE: HIGHEST SENSITIVITY IS WITH DIP SWITCHES IN THE OFF POSITION

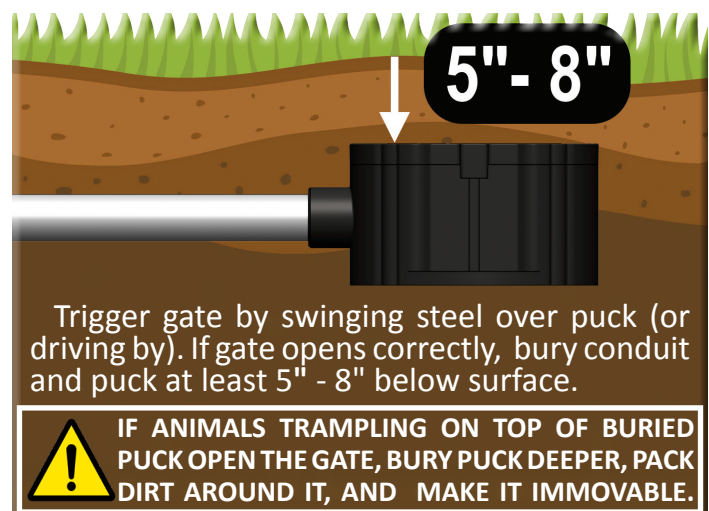
3. CONDUIT & SLIP JOINT



After pulling cable through plastic conduit, insert conduit inside slip joint on “puck.”

DO NOT GLUE (to un-install later, if needed).

6. BURY CONDUIT & “PUCK”



OTHER INSTRUCTIONS

NOTE: CP-4 IS NOT A SAFETY. YOU MUST ADD EXTERNAL SAFETY WHEN USING CP-4.

- CP-4 may be installed above ground by screwing “puck” directly to an immovable object.
- If installed above ground, use conduit to mechanically protect cable (animals will eat).
- **Vehicle needs to be going at least 5 MPH and must pass sensor to be detected.**

Install CP-4 at least:

- 6-10 feet away from buried power, telephone, or invisible dog fence
- 10 feet away from natural gas lines
- 20 feet away from power pole with a transformer
- 100 feet back from railroad traffic
- 200 feet away from high power substation power lines
- 80-100 feet back from gate operator

Technical Specifications

| | |
|----------------------|---|
| Power Required | 8–24 VAC or 8–30 VDC |
| Stand-By Current | 30–70 Microamps (µA) |
| Alarm Current | 30–40 Milliamps (mA) |
| Relay Time | 2–3 seconds |
| Relay Contacts | SPDT, floating, N.O. or N.C. (Form C) |
| Relay Contact Rating | 1 amp/24 VDC (1 mA at 5 VDC min. load) |
| Enclosure Rating | IP68 |
| Strength Rating | 9.53 ton-force 8646 kgf |
| Temperature Range | -25° F. – +140° F. -32° C. – 60° C. |
| Dimensions | 4.5 in. dia. x 2.5 in. high 11.43 cm dia. x 6.35 cm high |
| Weight | 5 lbs. (2.7 KG) with 100 ft. cable |



The CP-4 complies with part 15 of the FCC Rules. Operation is subject to the following two conditions: (1) This device may not cause harmful interference, and (2) this device must accept any interference received, including interference that may cause undesired operation.



WARNING: This product can expose you to chemicals including Acrylonitrile, which is known to the State of California to cause cancer. For more information, go to www.P65Warnings.ca.gov.

RETURNING MERCHANDISE

CONSUMER: Contact your installer

INSTALLER: CALL BEFORE DIGGING UP

Call (717) 532-0033, option 1 to troubleshoot and receive a Return Merchandise Authorization (R.M.A.) number. Write R.M.A. number on return shipping box and any correspondence included with defective product.

DISTRIBUTOR: Send installers directly to Cartell, citing 717-532-0033(option 1) as phone number.

3 YEAR WARRANTY

All Cartell products are warranted against defects in material and workmanship for three years. This warranty does not cover defects caused by, but not limited to: acts of God, improper installation, abuse, fire damage, electrical surges, integrated system failures, improper lid/gasket installation, overtightening screws, stripping screw holes, and damage to cable caused by slicing, pulling, tangling, improper splicing, and failure to run cable in non-metallic conduit.



CONTACT INFORMATION

| | |
|---------------------------------|--|
| TECH SUPPORT | 717-532-0033, option 1 |
| RMAs | 717-532-0033, option 1 |
| SHIPPING | 717-532-0033, option 2 |
| ACCOUNTING | 717-532-0033, option 3 |
| INSIDE SALES | 717-532-0033, option 4 |
| EMAIL | info@cartell.com |
| ORDERING (Distributors only) | orders@cartell.com |
| ADDRESS | 510 West King Street Shippensburg, PA 17257 |
| WEBSITE | www.cartell.com |

NOTES:



For more information, please visit www.devancocanada.com or call toll free at 1-855-931-3334